

WATER PURIFIER

Instruction Manual

Model: DT-WP-20

Dear Customers,

Welcome to use the Water Purification Expert, which utilizes six grade of high-precision filtration system, the effluent water is pure water which tastes better. Automatically control system make you to use this product easily, reassuredly and comfortably.

Water Purification Expert brings you safe and excellent drinking water, enables your three meals much more delicious, and makes you and your family members enjoy healthy and top-grade life.

Table of Contents

1. Safety Warning-----	1
1-1 Safety Issues-----	1
1-2 Packing List-----	2
2. Your Water Purification Expert-----	2~3
2-1 Part Name of Water Purifier-----	2
2-2.Electric Schematic Diagram-----	3
3. Use instructions-----	3~6
3-1.Use for the first time-----	3
3-2.Function description-----	4
3-3.Filter configuration-----	5
3-4.Replace the filter -----	5
4. Cleaning and Maintenance-----	6~7
5. Check the Abnormal Phenomenon by Yourself-----	7~8
6. Product Parameters-----	8

1. Safety Warning

1-1 Safety Issues

⊘ The followings are the content of [prohibited]



Protect from
sunlight



Inflammable
materials prohibited



Wet areas
prohibited



Do not touch
with wet hand

- It is forbidden to flush the machine body with water.
- It is forbidden to use universal socket and use with other appliances at the same time, and sockets with no less than 10A shall be used.
- It is strictly prohibited to put the water receiver in the air since it shall be put stably on the table.
- It is strictly prohibited to wipe the water tank with alcohol.
- It is forbidden to add cloudy tap water, ice blocks and mixed liquids such as milk, juice and so on in the water tank.

When taking water, it is strictly prohibited to extend the water nozzle into the cup so as to avoid the danger cause by blockage of water nozzle by boiling water.

! The followings are the content of [compulsory]



Grounding is required

- If the power cable is damaged, please replace it by the manufacturer or professional technician of the authorized repair office, avoid extrude, overlay, tie or damage the power cable.
- The bottom and the perimeter shall not be padded with other items.
- The suitable temperature of purified water in water tank is 4-38 °C.
- The socket for power cord connecting this product must be provided with reliable grounding device.
- When the ambient temperature is below 0 °C, the water in the machine may freeze, please note that the water in the machine is drained when it is not in use.

⚠ The followings are the content of [note]

- In order to avoid hazards, please place the machine on the flat, clean and heat-resistant table.
- Handle the product with care so as not to scratch or damage the product.
- Protect the machine from rain and snow during handling and storage.
- When the raw water does not conform to municipal tap water standard (including conditions such as high sediment content in water and over-standard residual chlorine, etc.), the service life of the filter will be reduced quickly, and the raw water is recommended to be pretreated and then added to the water tank.
- When taking out the water tank, make sure the machine is stable and prevent the machine from falling.

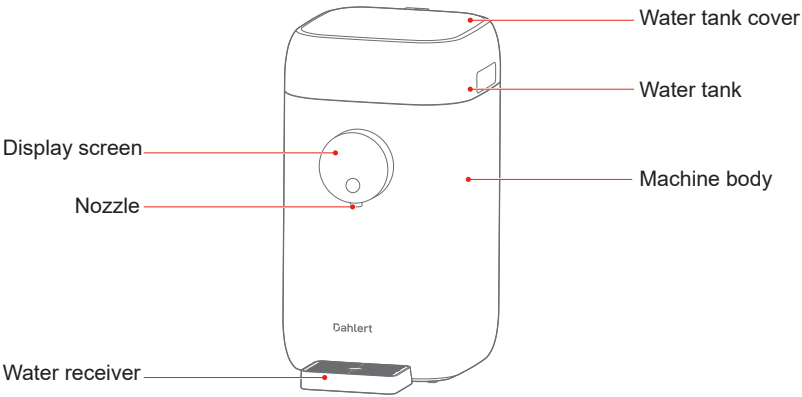
- In order to avoid the risks caused by misoperation, users with physical, sensory, mental deficiencies and children are not recommended to use this product, the above personnel should be supervised by normal adult to use the product.
- Clean and replace the filter regularly. The new machine shall be cleaned for the first time as required.
- When the water temperature is low, the water production time of the water tank will be prolonged, which is the characteristic of the membrane.
- The product design adopts the instant heating technology, and the top cover may be slightly hot during working, which is normal.
- When taking low temperature water immediately after taking water of high temperature, the temperature of the output water may be high, please prevent scald.
- This product is only applicable to safe use at altitudes below 1500m, please stop using it when the inlet temperature or ambient temperature is as low as 4 ℃ or high to 38 ℃.
- When the product is used for the first time or has not been used for a long period, there will be a delay in outputting water, which is normal.

1-2 packing list

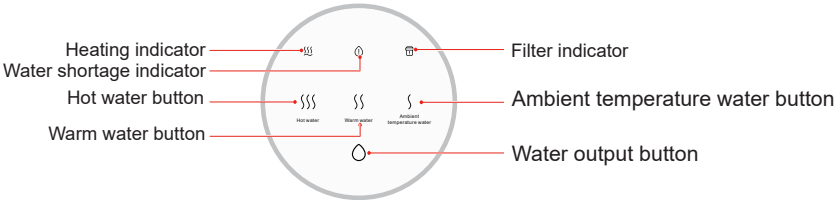
Packing box	Water purifier (1 set)
Materials bag	User's Manual (1 copy)

2. Your Water Purification Expert

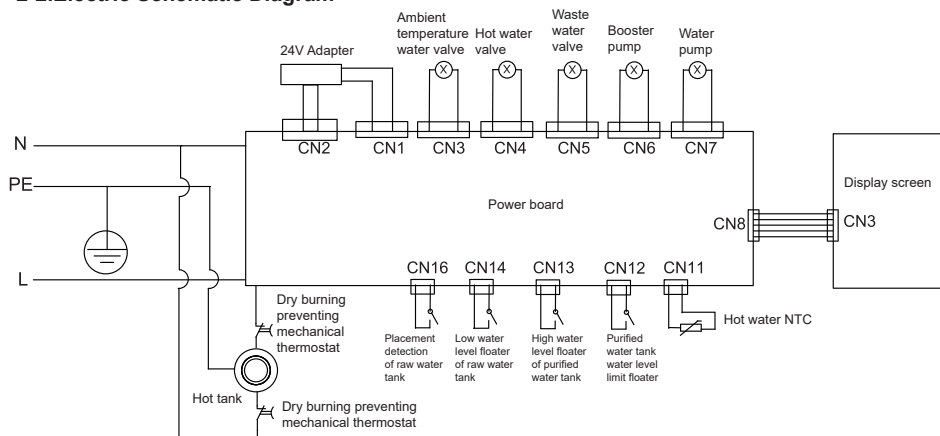
2-1 Part Name of Water Purifier



Display panel



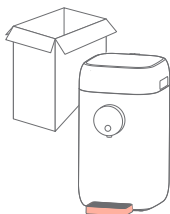
2.2.Electric Schematic Diagram



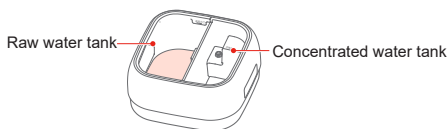
3. Use instructions

3-1.Use for the first time

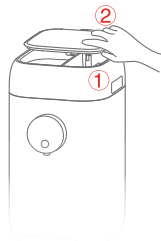
1. Unpack and place on the horizontal surface.
Install the water receiver.
2. Steps of removing the water tank
Life and pull out the water tank, and then lift it out after it is loose with the machine body.



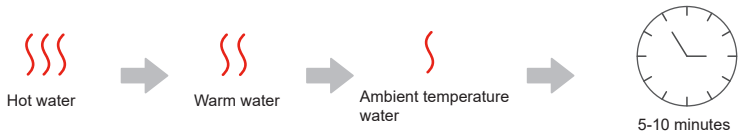
3. Steps for feeding and discharging water
 - 1.First, drain the remaining water from the water tank.
 - 2.Add tap water to the raw water tank (the bigger one).



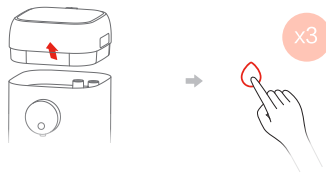
4. Install the water tank
 - 1.Align the water tank with the base jack and press down.
 - 2.Close the water tank cover after pressing the tank.



5. After supplying power, the product starts to produce water. The hot water, warm water, and ambient temperature water indicators turn on sequentially. Several minutes later, the water production is finished, the buzzer beeps once, and the indicators turn out, the water can be used normally. During this process, it may possibly require feeding and discharging water for several times.



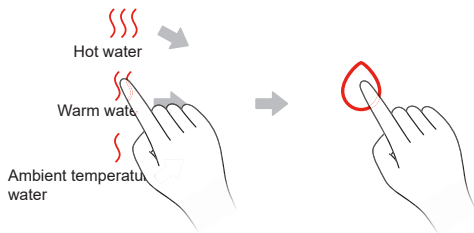
6. When using for the first time, please clean the internal pipes after producing water.
1. Take out the water tank;
 2. Emptying the water tank: Place the water pan under the water inlet, and hold the water output button to empty the water tank;
 3. Repeat for three times, then the machine can be used normally.



3-2.Function description

Taking water

When taking water, click the water temperature button, the corresponding indicator turns on, and the [output water] button will flash. Then click the [output water] button, the water flows out of the nozzle, press the button again to stop outputting water, and corresponding indicator turns off.

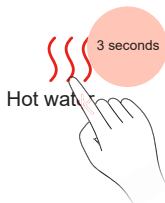


Heating

There are 3 ways to start the heating function:

1. Hold the [hot water] button;
2. Click the [hot water] button, and then click the [output water] button;
3. Click the [warm water] button, and then click the [output water] button.

The indicator flashes during the heating process. After heating, it enters the heat preservation state, the indicator keep on. Press the [hot water] button again to stop heating, and the corresponding indicator turns off.



Water shortage state of raw water tank

When the raw water tank is short of water, the "water shortage" indicator flashes, and no water can be output at this time. You need to lift the water tank to drain the concentrated water, add tap water to the raw water tank, and place it on the machine.



Notes:

Do not add water to the raw water tank continuously. After using one tank of water, discharge the concentrated water once. Otherwise, after 6 minutes of continuous water production, the "water shortage" indicator will flash, and water cannot be output at this time since the concentrated water shall be discharged by lifting the water tank.

3-3.Filter configuration

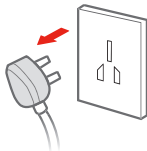
Filter name	Filter composition	Recommended life expectancy	Effect
Integrated composite filter (1pc)	PAC layer	12 months	Effectively remove the mud and sand, rust, suspended materials from water.
	Nanofiltration film layer		The theoretical filtering precision of filter reaches 0.001 micron, it is capable of filtering organics (Trichloromethane, carbon tetrachloride) and heavy metals (arsenic, lead and chromium) from water.
	Rear carbon rod layer		Effectively remove the mud and sand, rust, suspended materials, residual chlorine and bad smell from water.

3-4.Replace the filter

Notes:

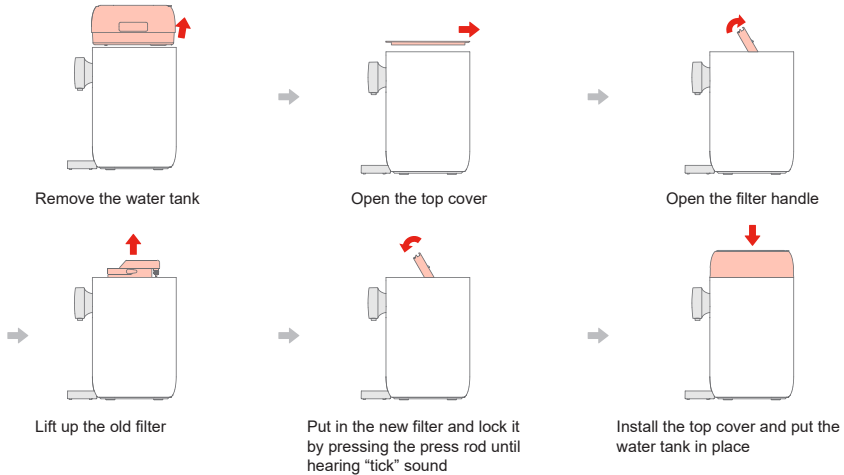
- The filter shall be replaced by yourself or the work staff designated by our company (Please purchase the filter from the local dealers, Midea Mall and Midea flagship store).
- A small amount of water may possibly flows out during the process of replacing filter, which is normal.

1. Cut off power supply before replacing the filter.

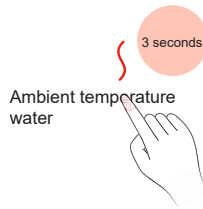


2. As shown in the figure below

1. Follow the steps below to replace the filter.



2. After replacing the filter, hold the [ambient temperature water] button for 3 seconds to reset the filter life.



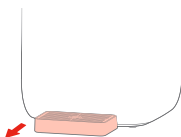
4. Cleaning and Maintenance

Daily Maintenance

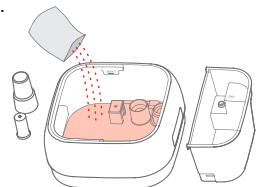
Note

Do not flush with splashing water when cleaning it, so as not to affect the electric insulation performance. Do not clean the machine with hard brush, wire rope brush, or organic solvent such as cleaning powder, hot water or strong acid, strong alkali and so on.

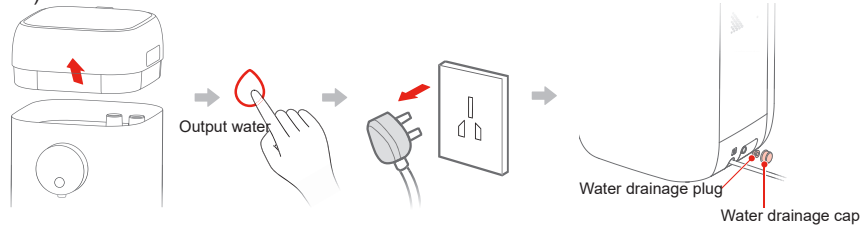
1. Remove the water receiver and drain the residual water in the water receiver.



2. Soak the water tank for 30min with descaling agent (such as citric acid) every month before cleaning it. Do not wipe it with organic solvent such as gasoline (Remove the filter cover, filter and concentrated water tank before cleaning the machine).



3. When the machine is not used for more than one week, it is recommended to remove the water tank, hold the water output button to drain remaining water from the machine, and then disconnect the power supply. Unscrew the water drainage cap, and then remove the drainage plug to discharge the remaining water from the hot tank. (Note: Hold the water output button to empty the water tank, and only normal temperature water is output, the heating function can't be started.)



5. Check the Abnormal Phenomenon by Yourself

⚠ NOTE
 The followings are the identification and check of common abnormalities, if it can't be removed through simple treatment, please send it to the repair office or consult our customer service hotline. Do not dismantle and repair it by yourself for avoiding danger or water dispenser & purifier damage.

Phenomenon	Solutions
Without power supply	·Please check if power is supplied.
Water can't be heated properly	·Please check whether the power voltage is 220V±15%.
The product can't normally produce water	·Please check whether the water tank is installed in place and whether there is water in the raw water tank. ·Please check if the filter is installed in place and whether the filter cover is at correct position. ·Check whether the water tank and the water inlet connecting the water tank is blocked by foreign matter. ·Check if the service life of the filter is expired.
The machine does not stop after long time water production	·Check if the service life of the filter is expired.
Water leakage	·Please check whether the water tank is installed in place. ·Please check if the filter is installed in place and whether the filter cover is at correct position. ·Replace the filter.
With peculiar smell	·In order to ensure the cleanness, please clean the machine regularly. If it is not in use for a long time, drain the water in the water tank, hold the normal temperature water button for 5 seconds to drain the water from the pure water tank(JR1878T-NF, hold the water outlet button for 3 seconds to drain the water from the pure water tank).
The screen can't be operated	·Unplug the power plug and then supply power again.

It is normal if the followings occur during use, please set your heart at relaxed to use it:

1. There is slight noise during the process of taking hot water.
2. The water pump will generate slight noise when the water dispenser & purifier is under purification and filtration.
3. The water output speed of the different water temperatures is not completely the same.
4. When the water temperature is too low, the water purification working time of the machine will be longer.

6. Product Parameters

For the technical improvement of the product, the following parameters are subject to change without prior notice, please refer to the nameplate of the product.

The purified water flow rate is tested when the environment temperature $25\pm 2^{\circ}\text{C}$, and the water temperature $25\pm 1^{\circ}\text{C}$.

Model	DT-WP-20
Rated Voltage / Frequency	220V- /50Hz
Rated hot water production capacity	$\geq 90^{\circ}\text{C}$, 4L/h
Rated power	430W
Rated general purified water flow rate	1000L
Purified water flow rate	0.2L/min
Water inlet pressure	0.05-0.1MPa
Working pressure	0.45-0.8MPa
Applicable water quality	Municipal tap water
Applicable environment temperature	$4-38^{\circ}\text{C}$
Appearance difference	White housing

Water treatment process drawing

Municipal tap water → Integrated composite filter (PP cotton, fiber active carbon, nanofiltration membrane, carbon rod active carbon) → Water output → Waste water

The product is subject to change without notice.
Please keep this manual properly.